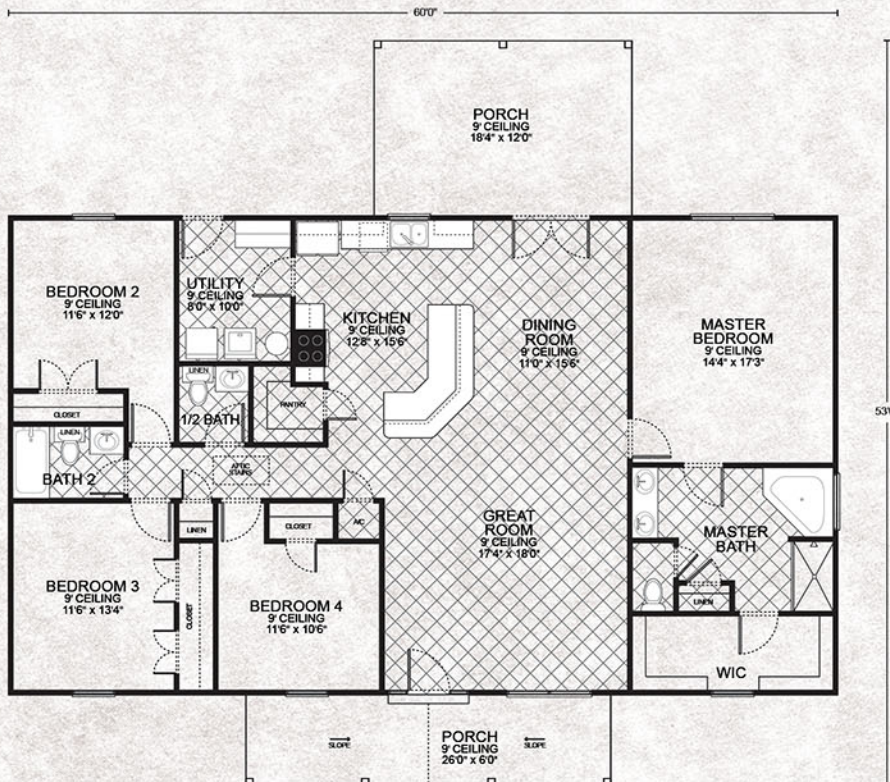


# BOWIE

4 Bedroom | 2.5 Bathrooms



## FLOOR PLAN



### APPROXIMATE FOOTAGES:

LIVING AREA:	2100 SQ. FT.
FRONT PORCH:	156 SQ. FT.
BACK PORCH:	221 SQ. FT.
TOTAL UNDER ROOF:	2477 SQ. FT.

[WWW.CAMELLIAHOMES.COM](http://WWW.CAMELLIAHOMES.COM)