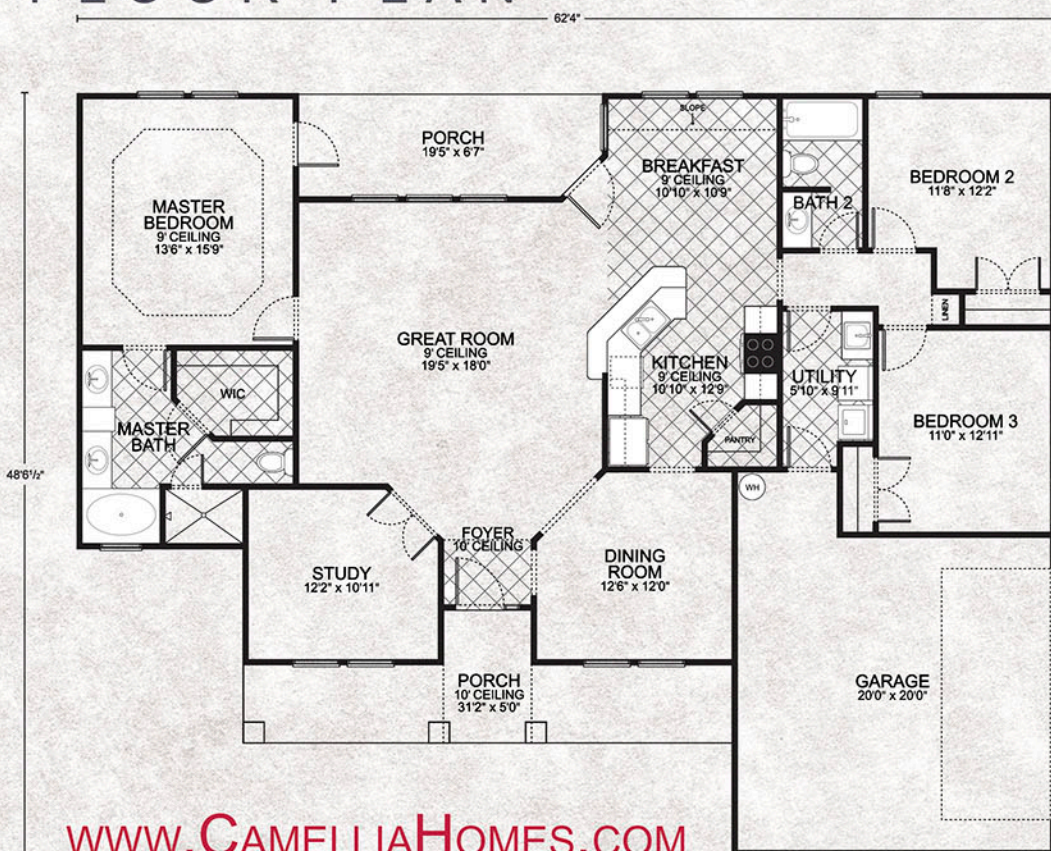


# DRIFTWOOD C

3 Bedroom | 2 Bathrooms



## FLOOR PLAN



### APPROXIMATE FOOTAGES:

LIVING AREA:	1853 SQ. FT.
GARAGE:	442 SQ. FT.
FRONT PORCH:	176 SQ. FT.
BACK PORCH:	124 SQ. FT.
TOTAL UNDER ROOF:	2595 SQ. FT.

[WWW.CAMELLIAHOMES.COM](http://WWW.CAMELLIAHOMES.COM)